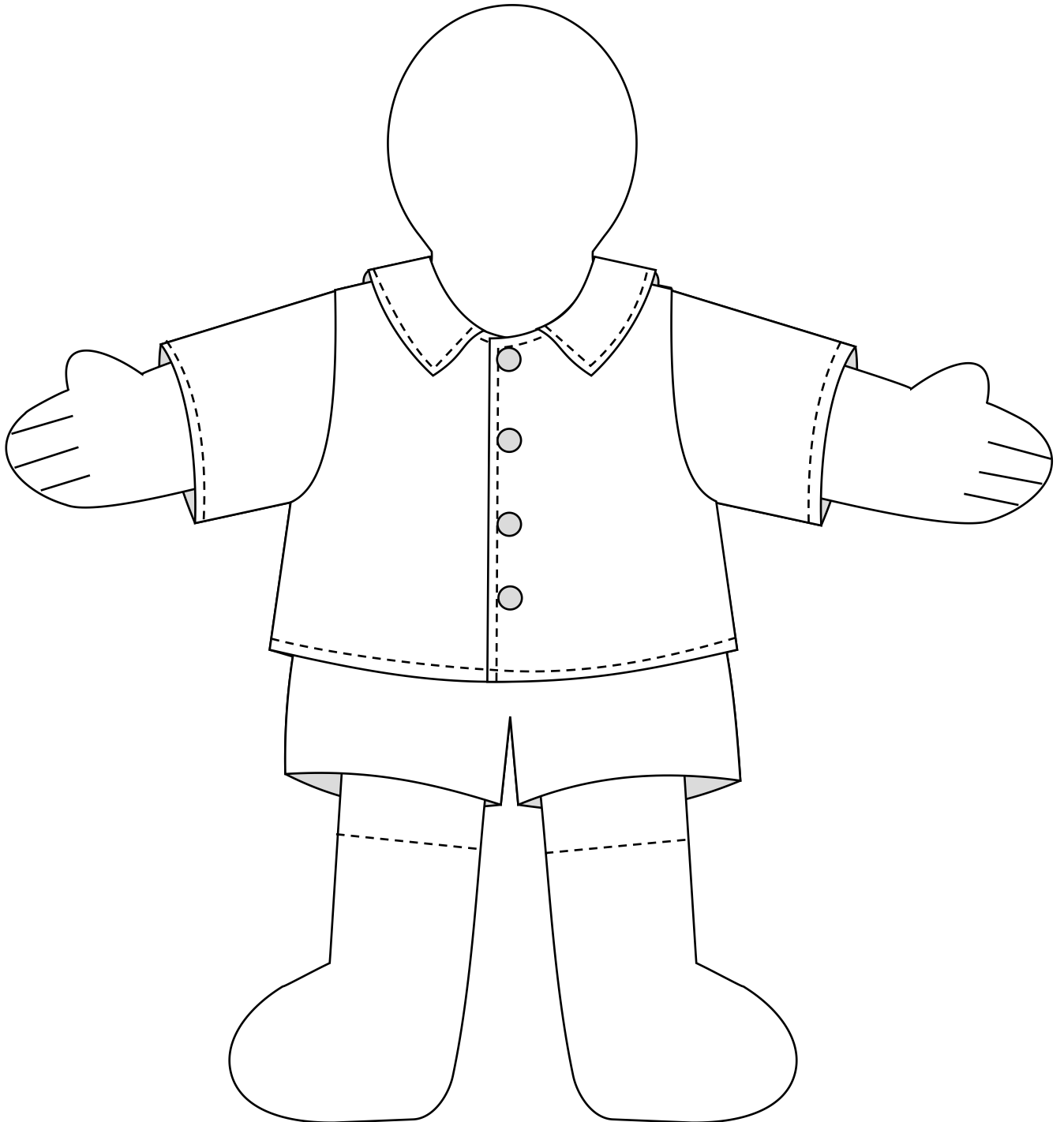


# How to...

## Basic Rag Doll Shirt Tutorial

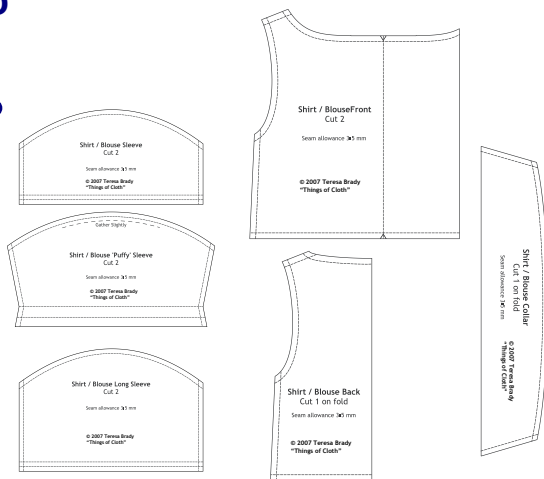
© 2007 Teresa Brady  
"Things of Cloth"



**make a simple doll shirt**

## Step

# 1.



**Diagram 1**

## Cut out the pattern pieces:

Cut 1 of the shirt back on the fold.

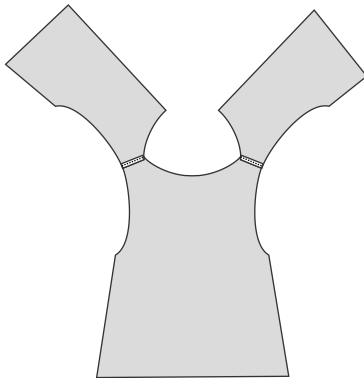
Cut 2 of the shirt front.

Cut 2 of the sleeves (after choosing what style of sleeve you want!).

You should have what is shown in *Diagram 1*.

## Step

# 2.



**Diagram 2**

## Join at the shoulders:

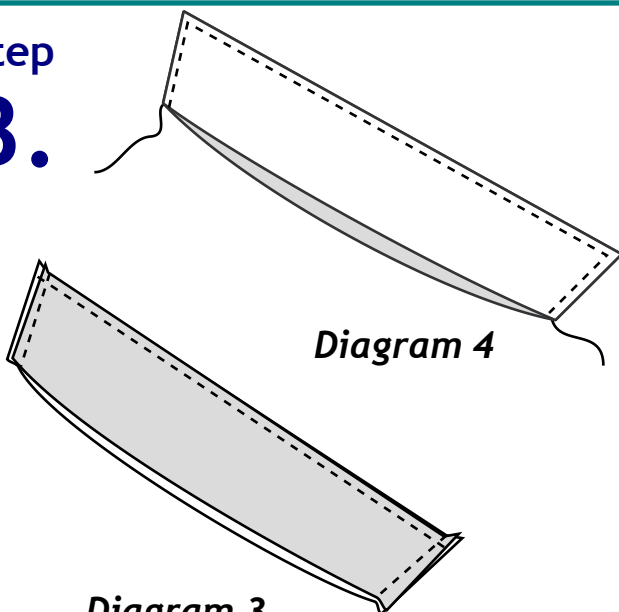
Join the two back pieces with the front piece by sewing along the shoulders.

*The grey is the wrong side of the fabric.*

You should have what is shown in *Diagram 2*.

## Step

# 3.



**Diagram 3**

## Make the collar:

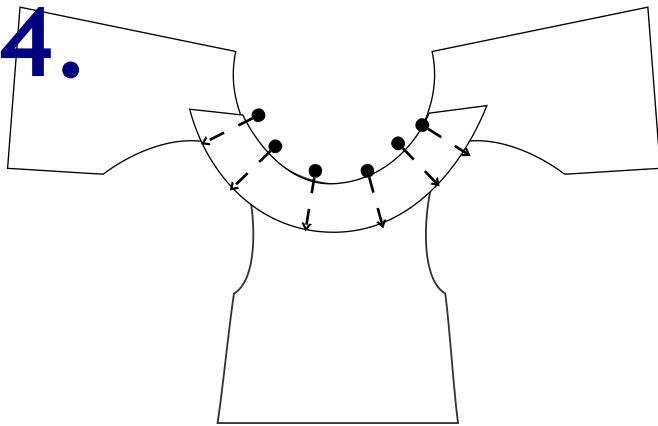
Sew two collar pieces right sides together, along two seams as shown in *Diagram 3*.

Turn right side out, so seams are on inside, as shown in *Diagram 4*.

Sew around outer edge of collar, as shown in *Diagram 4* - leave raw edge open.

**Step**

**4.**



*Diagram 5*

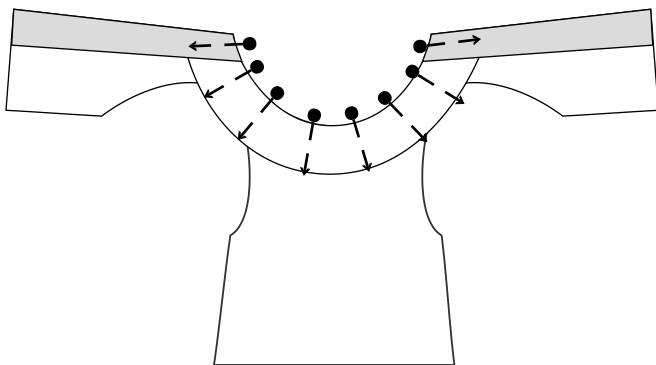
**Join collar to shirt - step 1:**

Pin the collar to the right side of the shirt, as shown in *Diagram 5*.

You may need to ease the shirt around the curve of the collar.

**Step**

**5.**



*Diagram 6*

**Join collar to shirt - step 2:**

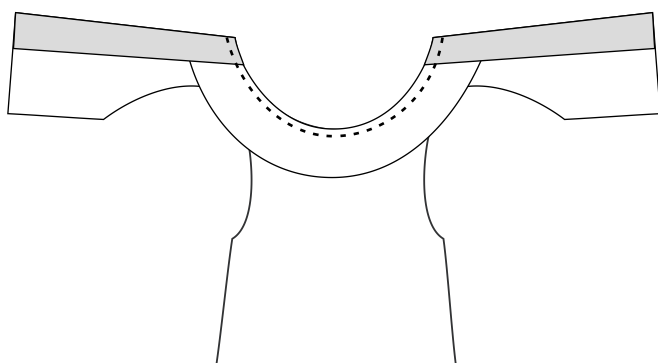
Fold the edges of the shirt over at the fold line indicated on the pattern - they should overlap the ends of the collar. The wrong side should now be showing.

Pin the folded-over edges down.

You should have what's shown in *Diagram 6*.

**Step**

**6.**



*Diagram 7*

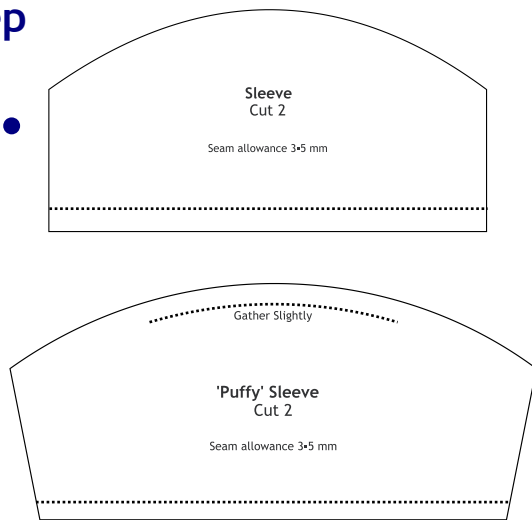
**Join collar to shirt - step 3:**

Stitch around neckline.

You should have what's shown in *Diagram 7*.

## Step

# 7.



**Diagram 8**

## Attach sleeves:

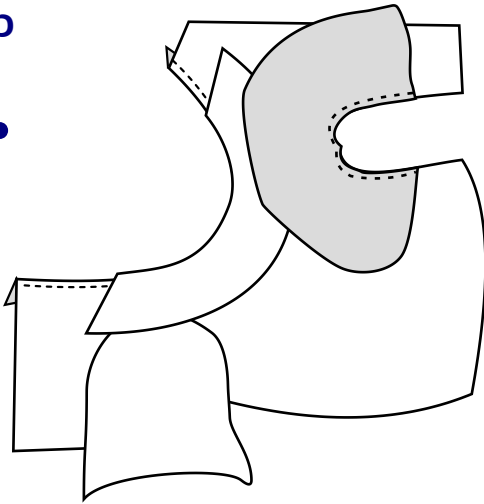
Fold the hem of the sleeves over and stitch as shown in *Diagram 7*.

The **long and short sleeves** are the same in how the hem is folded. The only difference in the sleeves are the lengths.

The **'Puffy' sleeve** is a little different in that it is shaped to allow for the puffiness. When the hem is folded over, the odd shape of the sleeve allows for the fold.

## Step

# 8.



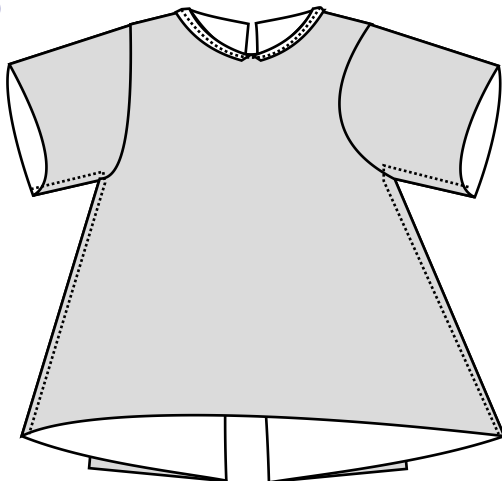
**Diagram 9**

Pin sleeves inside armholes - you may have to ease them in - then sew.

You should have what is shown in *Diagram 9*.

## Step

# 9.



**Diagram 10**

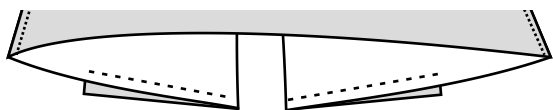
Sew along sleeve and along side shirt seam, as shown in *Diagram 10*.

Step

10.

### Finishing the shirt:

Pin, then sew along the bottom of the folded-over section, as shown in *Diagram 11*.



*Diagram 11*

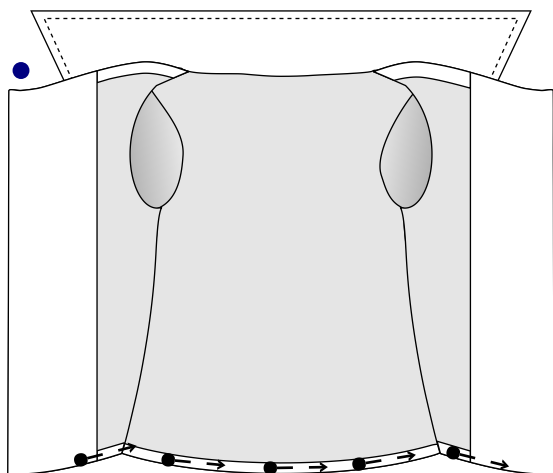
Step

11.

Turn shirt correct way out - facings should appear as in *Diagram 12*.

*(Remember - the grey represents the wrong side of the fabric!)*

The bottom hem should fold up into the shirt - press with iron and pin.



*Diagram 12*

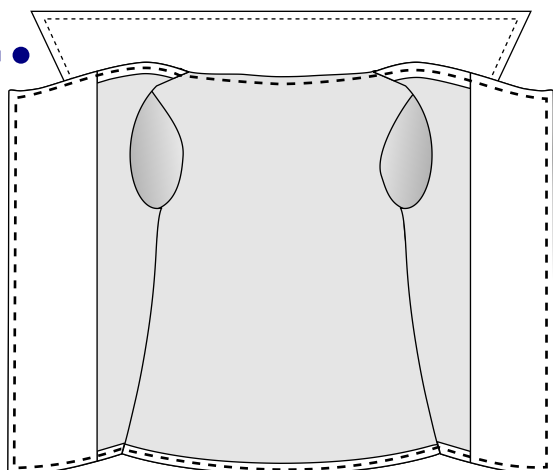
Step

12.

Sew around where indicated in *Diagram 13* - the heavy dashed line.

**Finish** the shirt by sewing on buttons, snaps or velcro dots.

If you're feeling clever, make button holes for the shirt - but if do this, I suggest ironing some light interfacing into the wrong side of the facing - see pattern for size of interfacing.



*Diagram 13*

Step

**13.**



*Diagram 14*

**The completed shirt:**

You should now have something similar to the shirt in *Diagram 14*.