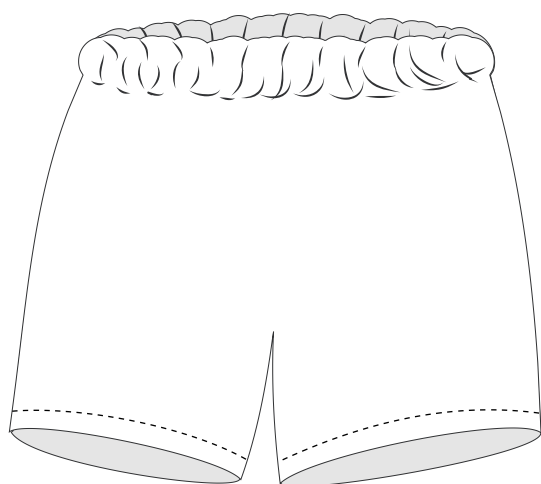
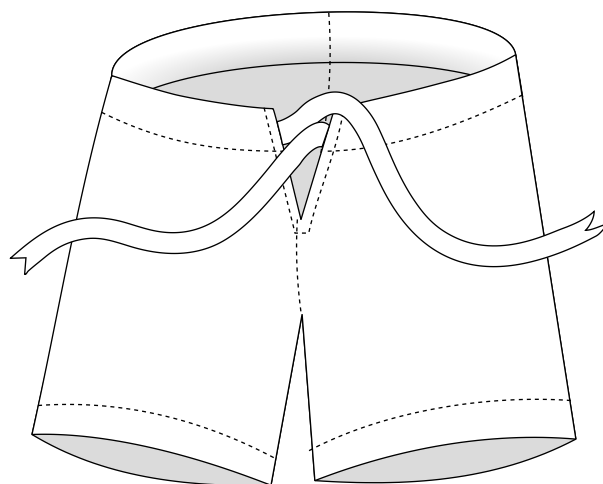
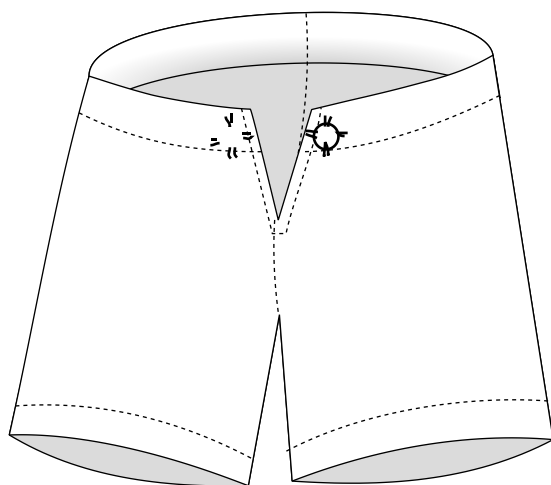


# How to...

## Basic Rag Doll

Undies (that can double as shorts or pants) Tutorial

© 2007 Teresa Brady  
"Things of Cloth"



This tutorial is for the short panties (or shorts). The pantaloons (or trousers) are made in the exact same way, the only difference is the length of the legs.

## make three different simple types of undies for a doll

---

**Part 1:** Make snap closure panties for your doll

**Part 2:** Make drawstring closure panties for your doll

**Part 3:** Make elastic-waist panties for your doll

---

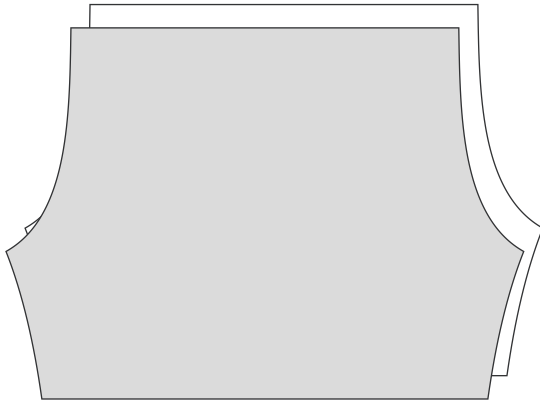
# Part 1:

## Make snap closure panties for your doll

*Made with a button closure. Button at front for shorts, button at back for panties.*

Step

1.



*Diagram 1*

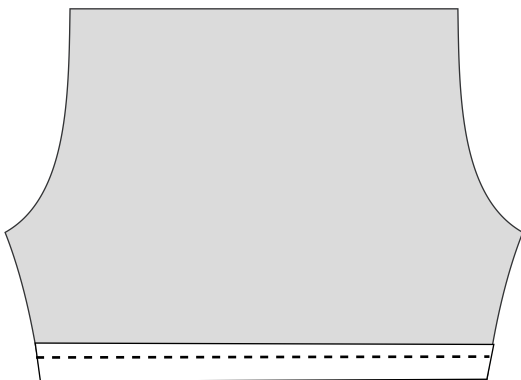
**Cut out the pattern pieces:**

Cut 2 of the shorts/panties, right sides facing.

You should have what is shown in *Diagram 1*.

Step

2.



*Diagram 2*

**Sew the hems:**

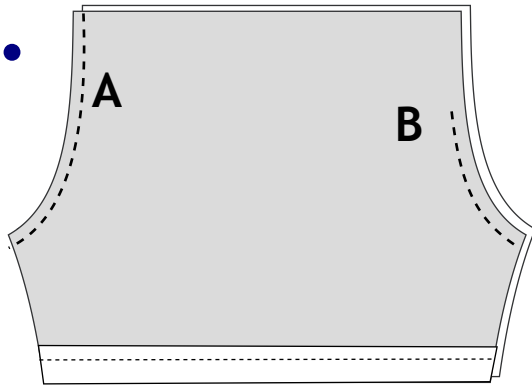
On each piece, fold hem (about 5mm) and sew.

Stitch along where shown (the heavy dashed line), in *Diagram 2*.

Here you can also attach lace, ribbon or broderie to the bottom.

Step

3.



*Diagram 3*

### Sewing the pieces together:

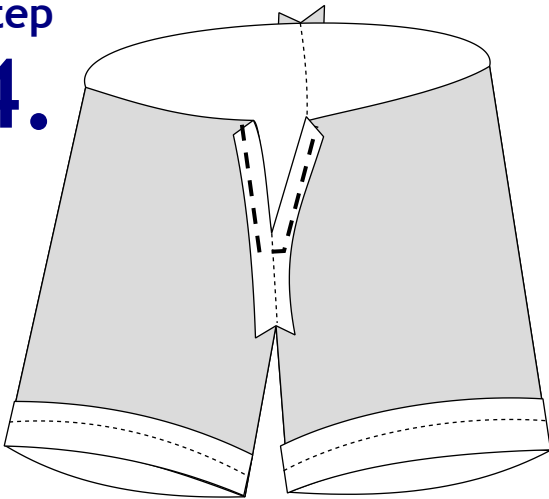
Lay one piece on top of the other. Stitch all the way along one seam (A), and about  $\frac{1}{2}$  way up along the other seam (B), as shown in *Diagram 3*.

*The grey is the wrong side of the fabric.*

You should have what is shown in *Diagram 2*.

Step

4.



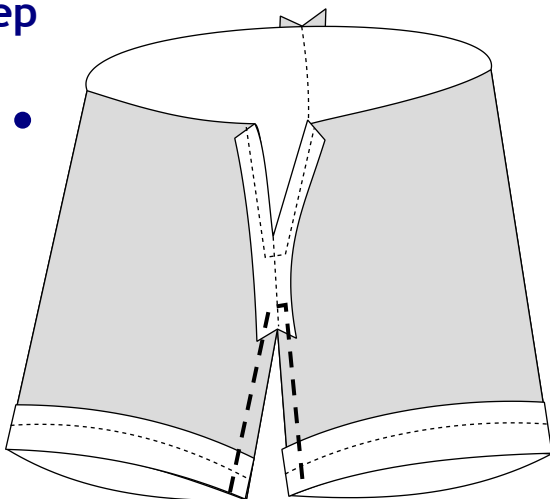
*Diagram 4*

### Sewing the plackets:

Open the shorts up. Match seams, pressing them flat. Fold over seam that is sewn part-way, iron flat (this should also flatten the back seam as well). Stitch around the partly open seam, as indicated by the heavy dashed line in *Diagram 4*.

Step

5.



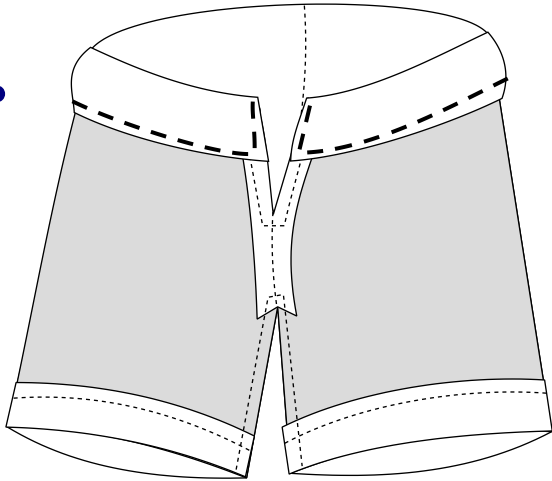
*Diagram 5*

### Sewing the inner leg seams:

Open the overalls up so that the two seams match. In the inner leg, sew up from the bottom of one leg all the way around to the other, as indicated by the heavy dashed line in *Diagram 5*.

Step

6.



*Diagram 6*

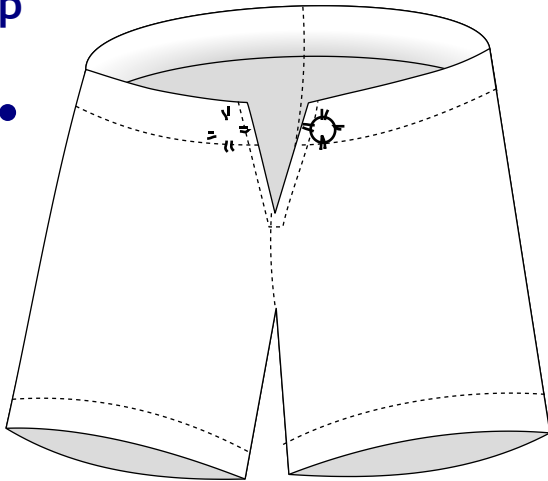
### Hemming around the waist:

Turn down the top edge, around the waist and stitch (as indicated by the heavy dashed line).

You should have something that looks like *Diagram 6*.

Step

7.



*Diagram 7*

### Adding the closures:

Turn down panties / shorts right side out - add a button / snap closure / velcro dot.

You should have something that looks like *Diagram 7*.

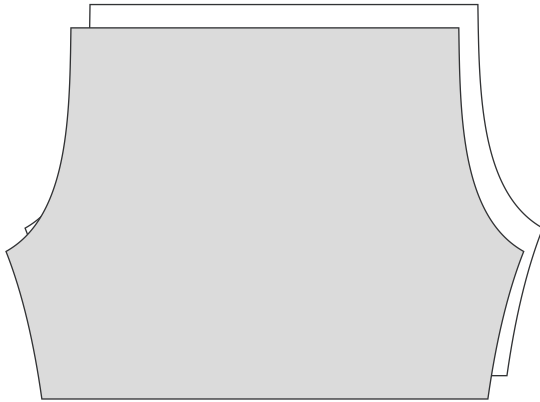
## Part 2:

# Make drawstring closure panties for your doll

*Made with a drawstring closure. Tie at front for shorts, tie at back for panties.*

Step

1.



*Diagram 1*

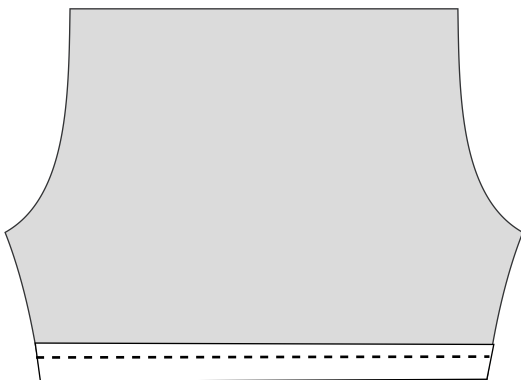
**Cut out the pattern pieces:**

Cut 2 of the shorts/panties, right sides facing.

You should have what is shown in *Diagram 1*.

Step

2.



*Diagram 2*

**Sew the hems:**

On each piece, fold hem (about 5mm) and sew.

Stitch along where shown (the heavy dashed line), in *Diagram 2*.

Here you can also attach lace, ribbon or broderie to the bottom.

Step

3.

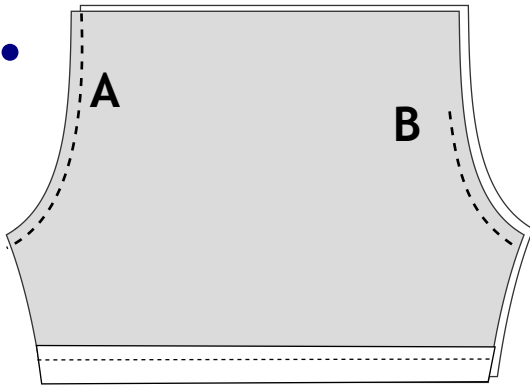


Diagram 3

### Sewing the pieces together:

Lay one piece on top of the other. Stitch all the way along one seam (A), and about  $\frac{1}{2}$  way up along the other seam (B), as shown in *Diagram 3*.

*The grey is the wrong side of the fabric.*

You should have what is shown in *Diagram 2*.

Step

4.

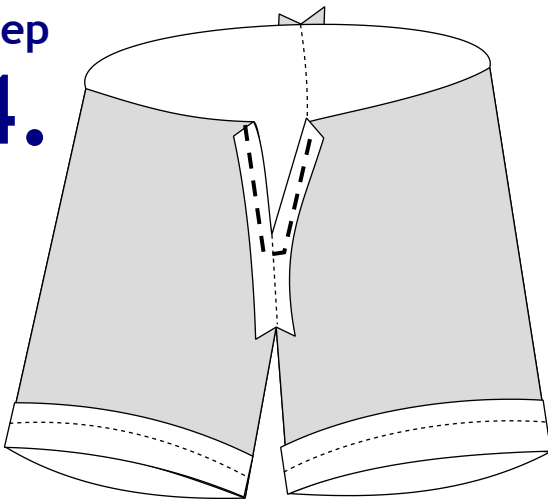


Diagram 4

### Sewing the plackets:

Open the shorts up. Match seams, pressing them flat. Fold over seam that is sewn part-way, iron flat (this should also flatten the back seam as well). Stitch around the partly open seam, as indicated by the heavy dashed line in *Diagram 4*.

Step

5.

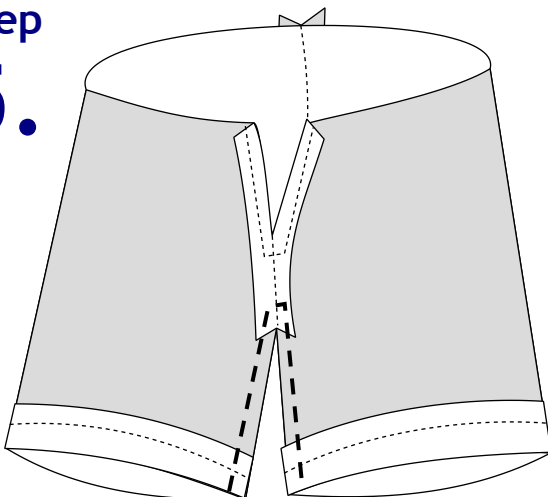


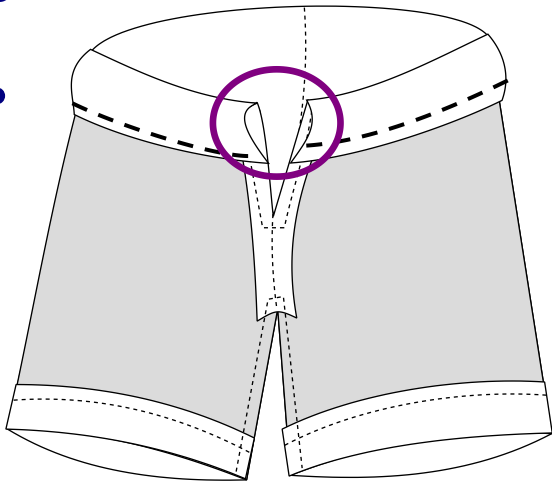
Diagram 5

### Sewing the inner leg seams:

Open the overalls up so that the two seams match. In the inner leg, sew up from the bottom of one leg all the way around to the other, as indicated by the heavy dashed line in *Diagram 5*.

Step

6.



*Diagram 6*

### Hemming around the waist:

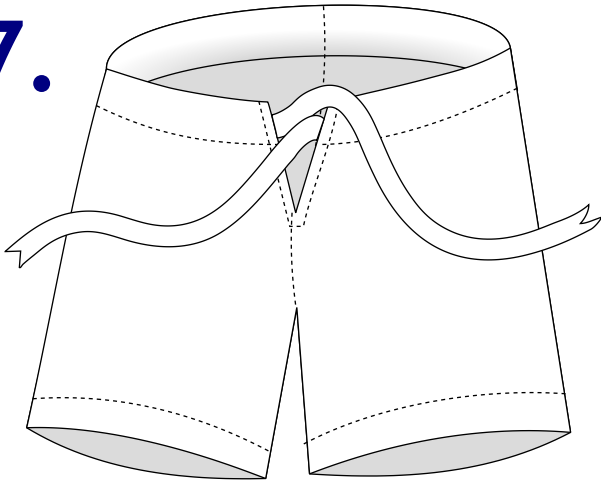
Turn down the top edge, around the waist and stitch.

You should have something that looks like *Diagram 6*.

*Leave the ends open (circled), to make it into a casing, if you wish to use a drawstring of ribbon, as a closure.*

Step

7.



*Diagram 7*

### Adding the drawstring:

Use a small safety pin and thread some ribbon or cord through the casing, as shown in *Diagram 7*.

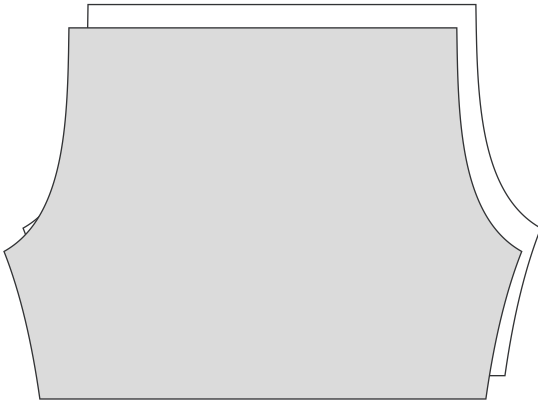
## Part 3:

# Make elastic-waist panties for your doll

*Elastic waist panties that are easy to make - decorate with lace, ribbon, whatever you have on hand.*

Step

1.



*Diagram 1*

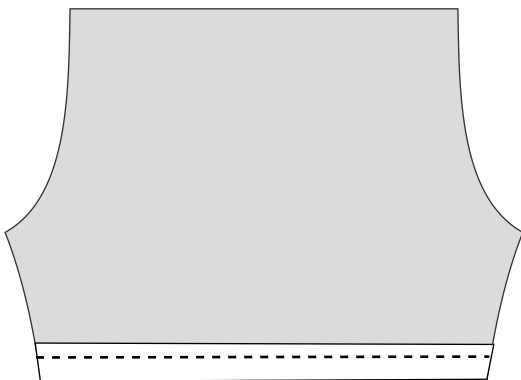
**Cut out the pattern pieces:**

Cut 2 of the shorts/panties, right sides facing.

You should have what is shown in *Diagram 1*.

Step

2.



*Diagram 2*

**Sew the hems:**

On each piece, fold hem (about 5mm) and sew.

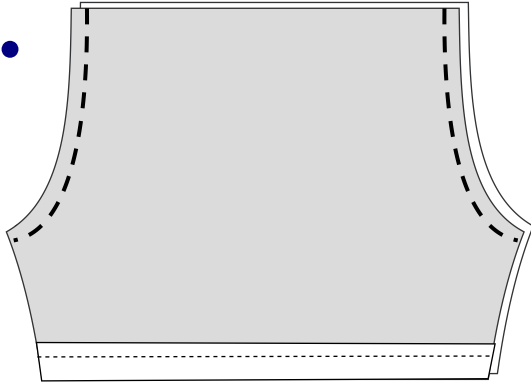
Stitch along where shown (the heavy dashed line), in *Diagram 2*.

Here you can also attach lace, ribbon or broderie to the bottom.



Step

3.



*Diagram 3*

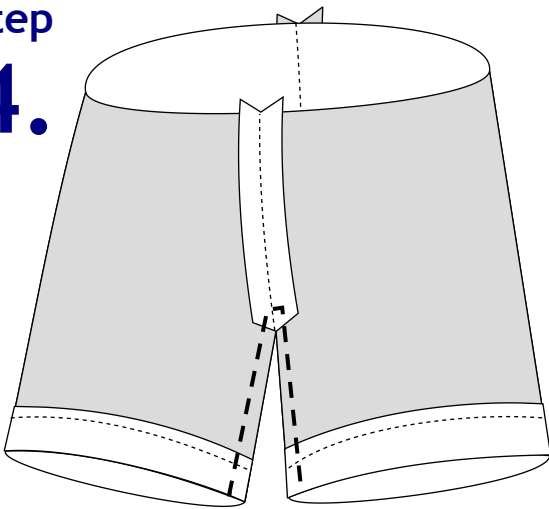
### Sewing the pieces together:

Lay one piece on top of the other. Stitch front and back, as indicated by the heavy dashed line, in *Diagram 3*.

*The grey is the wrong side of the fabric.*

Step

4.



*Diagram 4*

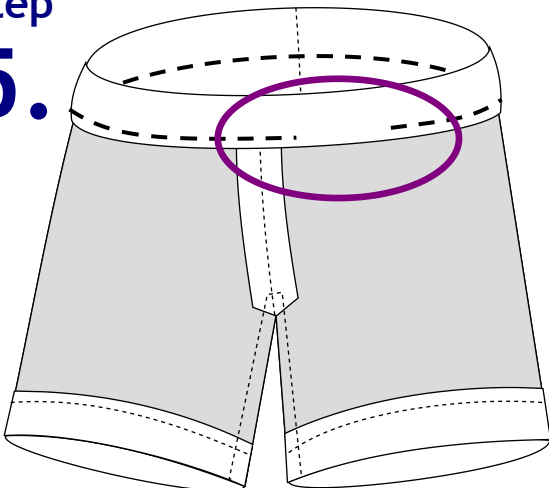
### Sewing the inner leg seams:

Open the overalls up so that the two seams match. Press with an iron.

In the inner leg, sew up from the bottom of one leg all the way around to the other, as indicated by the heavy dashed line in *Diagram 4*.

Step

5.



*Diagram 5*

### Hemming around the waist:

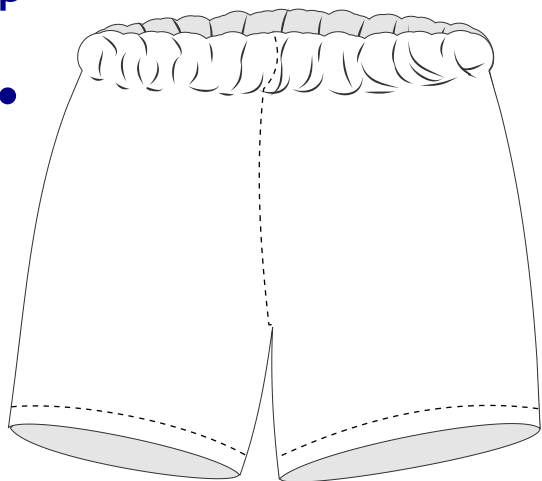
Turn down the top edge, around the waist and stitch.

Leave a gap (circled) so that you can insert elastic.

You should have something that looks like *Diagram 5*.

Step

6.



**Diagram 6**

### Finishing:

Turn panties / shorts right side out

You should have something that looks like **Diagram 6**.

Embellish to your hearts content!